

HIGHLIGHTS

# Hot Tip Project

Newly identified upwelling zone within graben hosted alteration cell

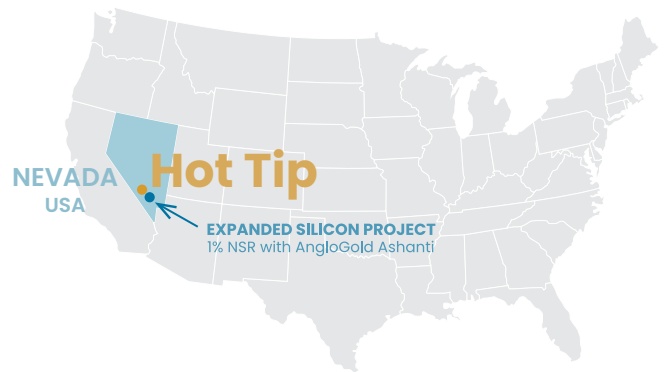


Laurence Pryer  
 Vice President Exploration  
[laurence@orogenroyalties.com](mailto:laurence@orogenroyalties.com)

Eli Turner  
 Project Geologist  
[eli@orogenroyalties.com](mailto:eli@orogenroyalties.com)

## THE OPPORTUNITY

- Large five-kilometre diameter, graben hosted, gold-poor steam heated alteration cell
- Newly recognized core of alteration cell composed of intense alunite alteration
- Central core indicates a structurally controlled region of upwelling fluid flow untested by historical drilling
- Anomalous gold in historical drilling peripheral to the alunite-pyrite core and widespread pathfinder element anomalism
- Chargeability coincident with alunite alteration displays potential scale of the system
- District scale target open under cover to the north and south

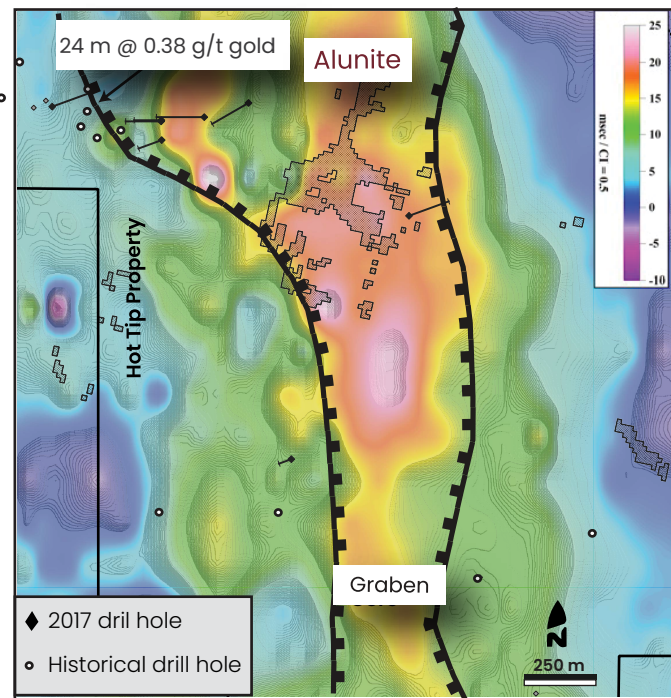
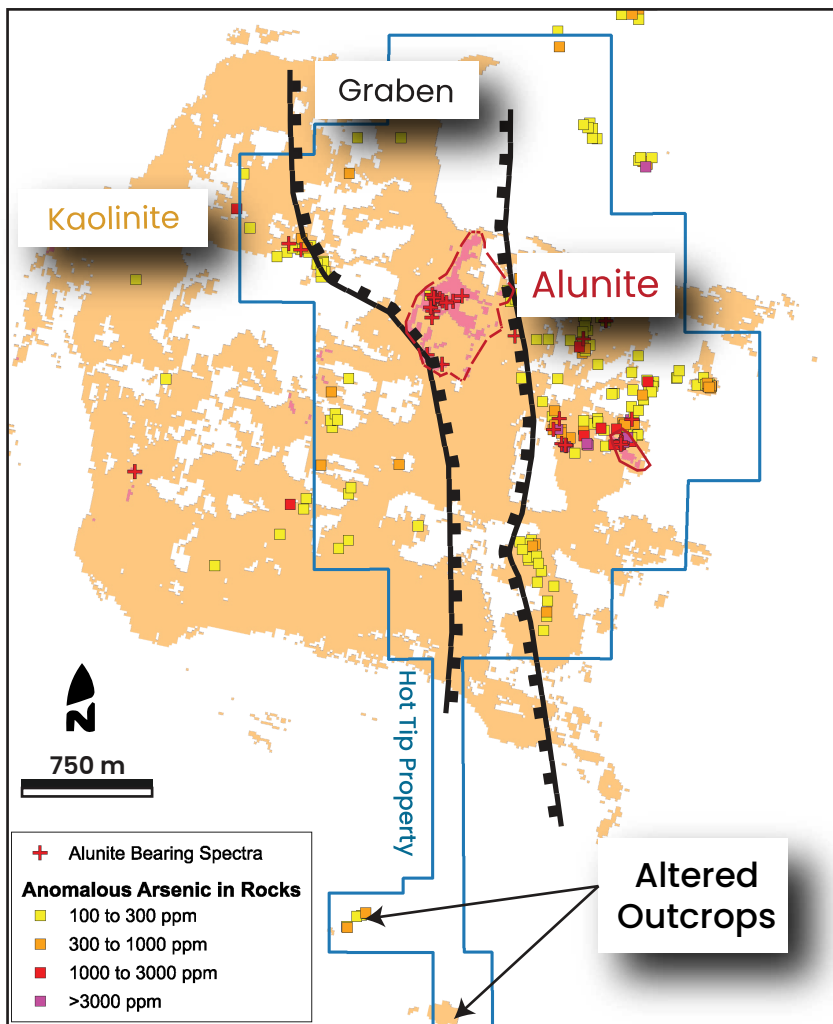


### HOT TIP LOCATION

Road-accessible BLM ground 120 kilometres northeast of Tonopah.

### REGIONAL GEOLOGY

Located within a province of calderas related to slab rollback magmatism. Analogous to the Round Mountain gold-silver deposit.



## GEOLOGY AND ALTERATION

- Five-kilometre diameter advanced argillic alteration cell with widespread silicification focused on graben
- Alteration is hosted by Oligocene volcanic rocks and calcareous sedimentary rocks of the underlying Devonian Nevada Formation
- Widespread highly anomalous pathfinder elements

## PRIMARY TARGET

- Alunite rich core of alteration cell indicates proximity to an underlying boiling zone
- Strong structural control with target focused on centre of graben
- Peripheral gold mineralization intercepted in historic drilling
- Historical IP define extensive chargeability anomaly which displays extent of this zone and is untested by historical drilling
- Target remains open to the north and south

