

HIGHLIGHTS

Hot Tip Project

Newly identified upwelling zone within graben hosted alteration cell

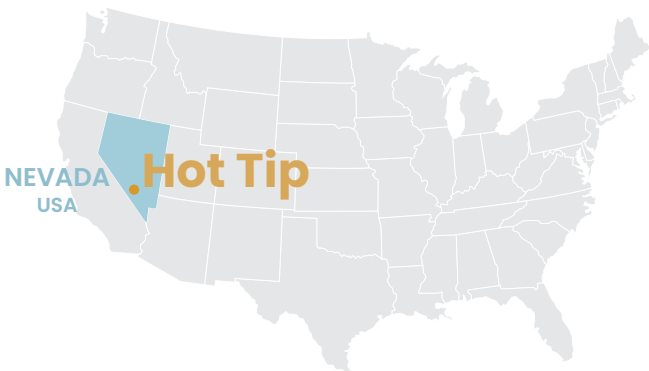


Laurence Pryer
Vice President Exploration
laurence@orogenroyalties.com

Michael Say
Senior Geologist
michael.say@orogenroyalties.com

THE OPPORTUNITY

- Large five-kilometre diameter, graben hosted, gold-poor steam heated alteration cell
- Newly recognized core of alteration cell composed of intense alunite alteration
- Central core indicates a structurally controlled region of upwelling fluid flow untested by historical drilling
- Anomalous gold in historical drilling peripheral to the alunite-pyrite core and widespread pathfinder element anomalism
- Chargeability coincident with alunite alteration displays potential scale of the system
- District scale target open under cover to the north and south

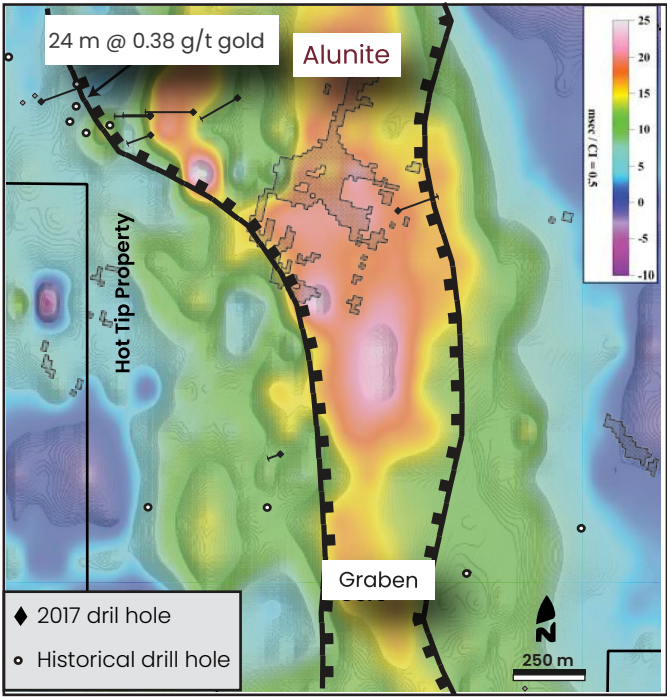
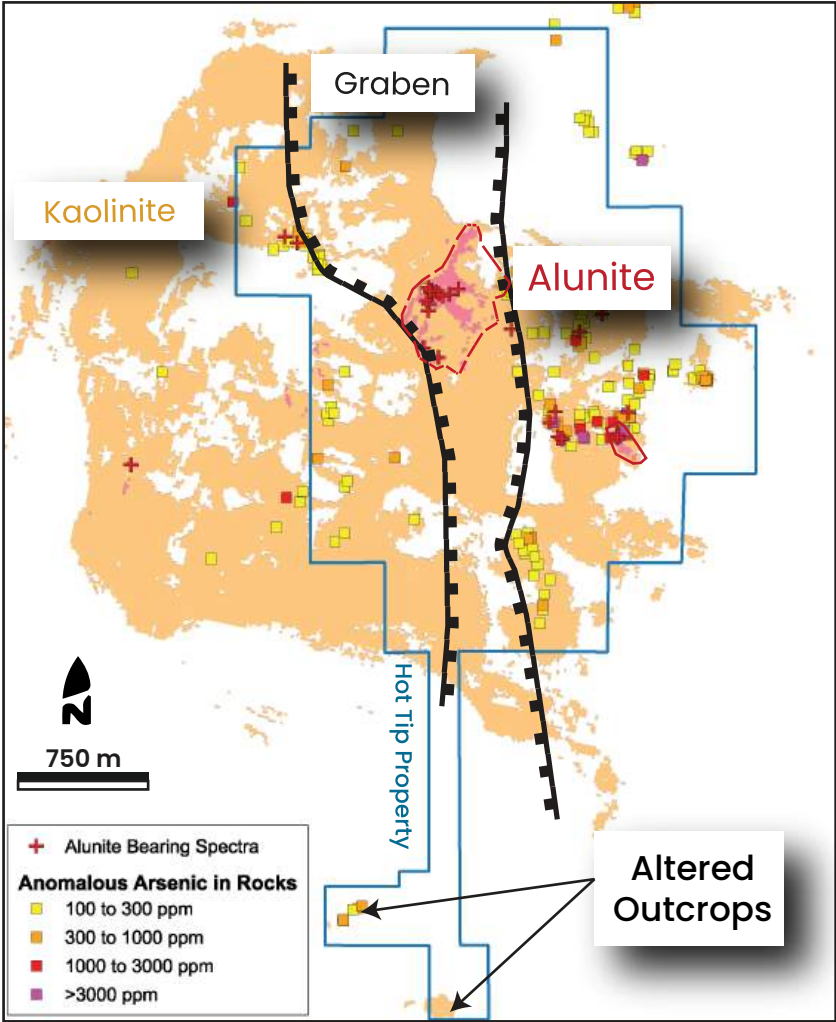


HOT TIP LOCATION

Road-accessible BLM ground 120 kilometres northeast of Tonopah.

REGIONAL GEOLOGY

Located within a province of calderas related to slab rollback magmatism. Analogous to the Round Mountain gold-silver deposit.



GEOLOGY AND ALTERATION

- Five-kilometre diameter advanced argillic alteration cell with widespread silicification focused on graben
- Alteration is hosted by Oligocene volcanic rocks and calcareous sedimentary rocks of the underlying Devonian Nevada Formation
- Widespread highly anomalous pathfinder elements

PRIMARY TARGET

- Alunite rich core of alteration cell indicates proximity to an underlying boiling zone
- Strong structural control with target focused on centre of graben
- Peripheral gold mineralization intercepted in historic drilling
- Historical IP define extensive chargeability anomaly which displays extent of this zone and is untested by historical drilling
- Target remains open to the north and south

