

HIGHLIGHTS

# Pearl String Gold Project

New structural model reveals covered high-sulphidation target

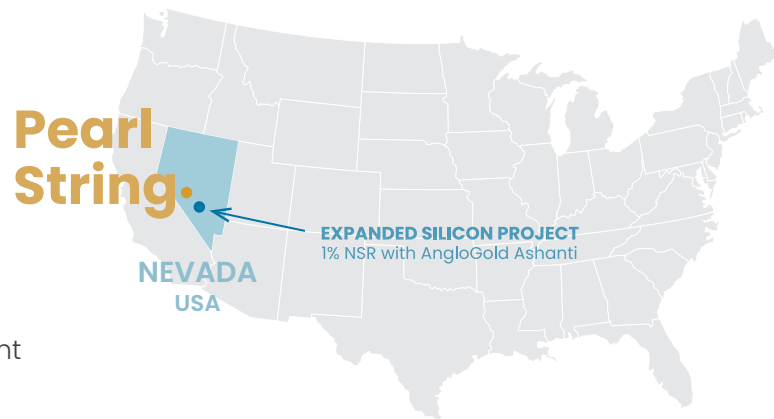


Laurence Pryer  
 Vice President Exploration  
[laurence@orogenroyalties.com](mailto:laurence@orogenroyalties.com)

Eli Turner  
 Project Geologist  
[eli@orogenroyalties.com](mailto:eli@orogenroyalties.com)

## THE OPPORTUNITY

- High-sulphidation epithermal project with strong advanced argillic alteration and up to 12 g/t gold at surface
- Near Paradise Peak and Isabella Pearl high-sulphidation mines
- Data-rich and drill ready project with multiple layers of geophysics and framework drilling
- Post-mineral faulting, a major exploration challenge in this trend, can be restored with the benefit of recent exploration drilling data
- New structural model indicates undrilled target with multi-million ounce gold potential under post mineral cover



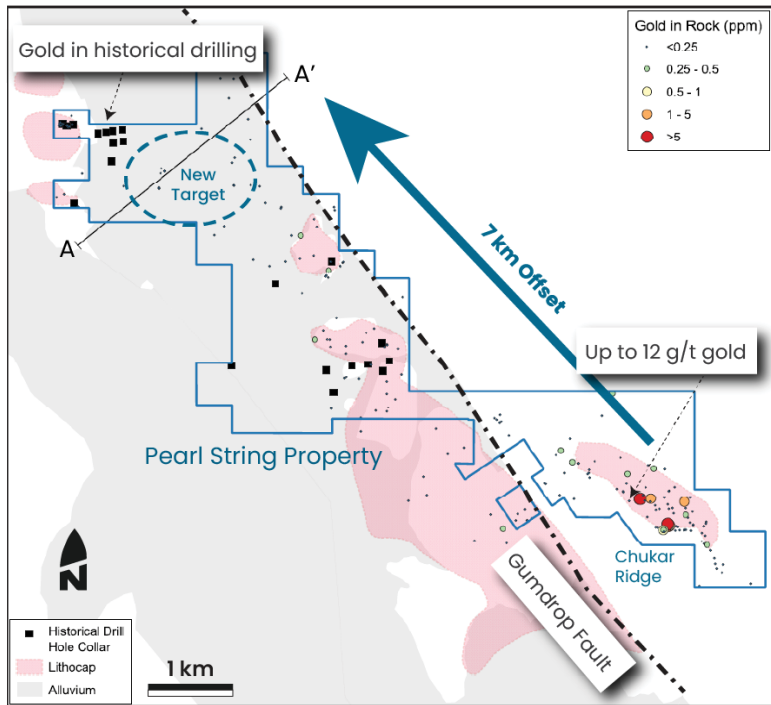
### PEARL STRING LOCATION

201 claims located on BLM ground. 150 kilometres southeast of Reno and 20 kilometres north of US highway 95.



### REGIONAL GEOLOGY

Northern portion of a twenty-five-kilometres long lithocap which has been dissected by multiple faults and partly hidden by post-mineral cover

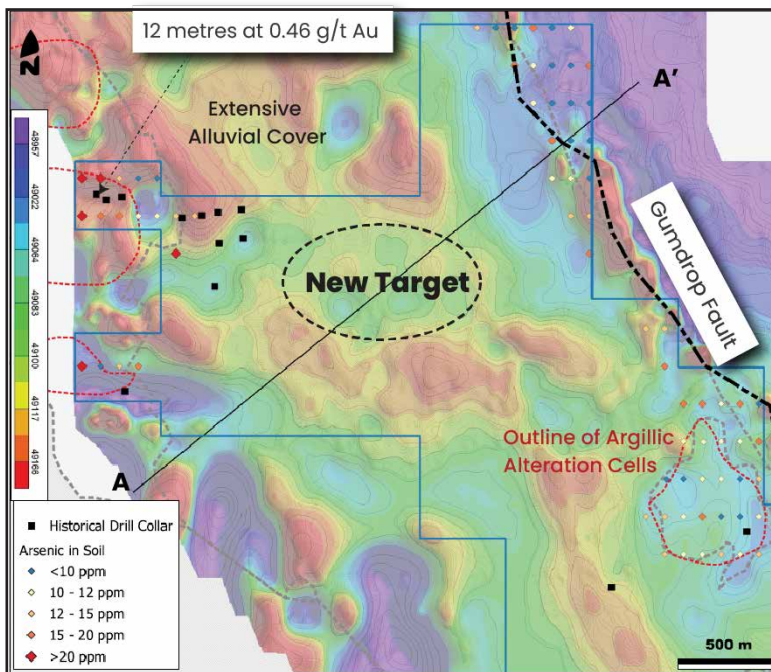


## ALTERATION MINERALOGY

- Advanced argillic alteration exposed throughout property
- Classic environment for high sulphidation epithermal deposits
- Outcropping alteration in center of property and Chukar Ridge area to southeast
- Highly anomalous gold at Chukar Ridge
- Alteration controlled by northwest trending normal faults and also offset by post-mineral faults

## MAIN TARGET

- Restoring slip on all structures indicates the roots to the Chukar Ridge anomaly are in the vicinity of an undrilled new main target zone which could be the heart of the system
- Main target occurs under post-mineral cover rimmed by strong advanced argillic alteration and anomalous pathfinder geochemistry
- Subdued magnetics consistent with hydrothermal alteration
- Historical gold intercepts in drilling immediately to the west of main target may represent mineralization in the peripheral part of the system
- Potential exists in this new target zone for a multi-million ounce high-sulphidation system



Looking NW

