

# Table Mountain

High-level exposure of an untested  
epithermal system with gold bearing veins



O R O G E N

[orogenroyalties.com](http://orogenroyalties.com)



# Forward Looking Information

This presentation includes certain statements that may be deemed “forward looking statements”. All statements in this presentation, other than statements of historical facts, that address events or developments that Orogen Royalties Inc. (the “Company”) expects to occur, are forward looking statements. Forward looking statements are statements that are not historical facts and are generally, but not always, identified by the words “expects”, “plans”, “anticipates”, “believes”, “intends”, “estimates”, “projects”, “potential” and similar expressions, or that events or conditions “will”, “would”, “may”, “could” or “should” occur.

Although the Company believes the expectations expressed in such forward looking statements are based on reasonable assumptions, such statements are not guarantees of future performance and actual results may differ materially from those in the forward looking statements. Factors that could cause the actual results to differ materially from those in the forward looking statements include market prices, exploitation and exploration success, and continued availability of capital and financing, and the general economic, market or business conditions. Investors are cautioned that any such statements are not guarantees of future performance and actual results or developments may differ materially from those projected in the forward looking statements. Forward looking statements are based on the beliefs, estimates and opinions of the Company’s management on the date the statements are made. Except as required by securities laws, the Company undertakes no obligation to update these forward looking statements in the event that management’s beliefs, estimates or opinions, or other factors, should change.



# Project Summary

- Epithermal system exhibiting high-level alteration dominated by kaolinite with lesser illite
- Variable vein textures including crustiform-colloform fine-grained quartz and coarse silica after platy calcite texture
- Gold values up to 2.6 g/t in fine grained quartz veins
- Notable absence of evidence of prior work or drilling, including lack of legacy claim posts or prospect pits
- Clear drill targets revealed by work to date



3 Fine-grained quartz vein float with crustiform-colloform banding. Runs 1.3 g/t gold and 49.7 g/t silver.



Outcrop of a half metre wide quartz vein with silicified platy calcite textures.



# Location

- 85 claims on BLM land covering about seven square kilometres with minor private parcel inliers
- In the Wilson Creek range 250 kilometres northeast of Las Vegas
- Rugged jeep trail access 50 linear kilometres from Pioche and 110 kilometres from Ely





# Regional Geology

- Located in the northern portion of the Oligo-Miocene Indian Peak Caldera Complex
- This constitutes a prospective magmatic-tectonic setting that remains relatively underexplored
- The Table Mountain system is hosted in the ca. 23 Ma Blawn Mountain Formation which postdates most activity in the Indian Peak Complex
- Same stratigraphic host and possibly similar in age to the nearby mineralization at Gold Springs

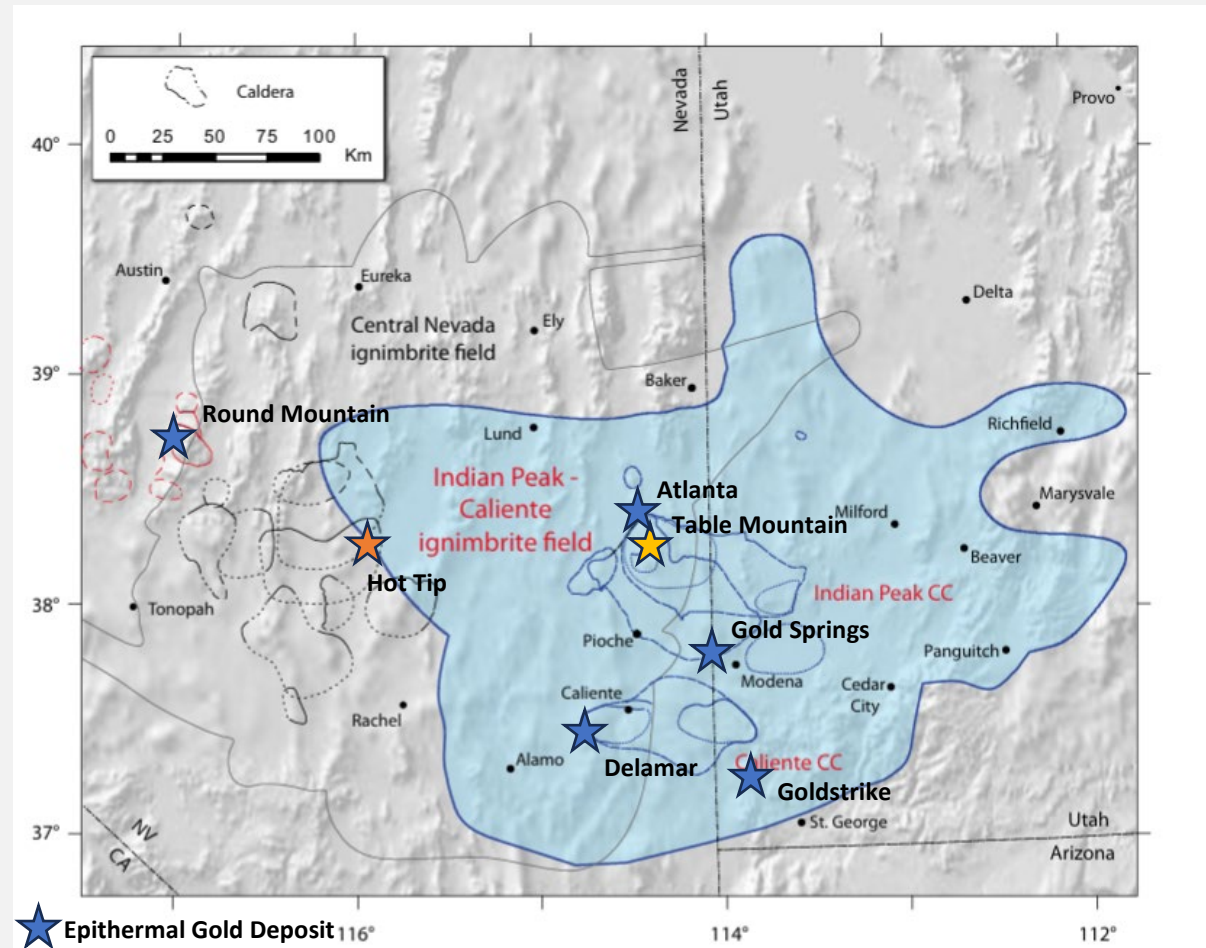
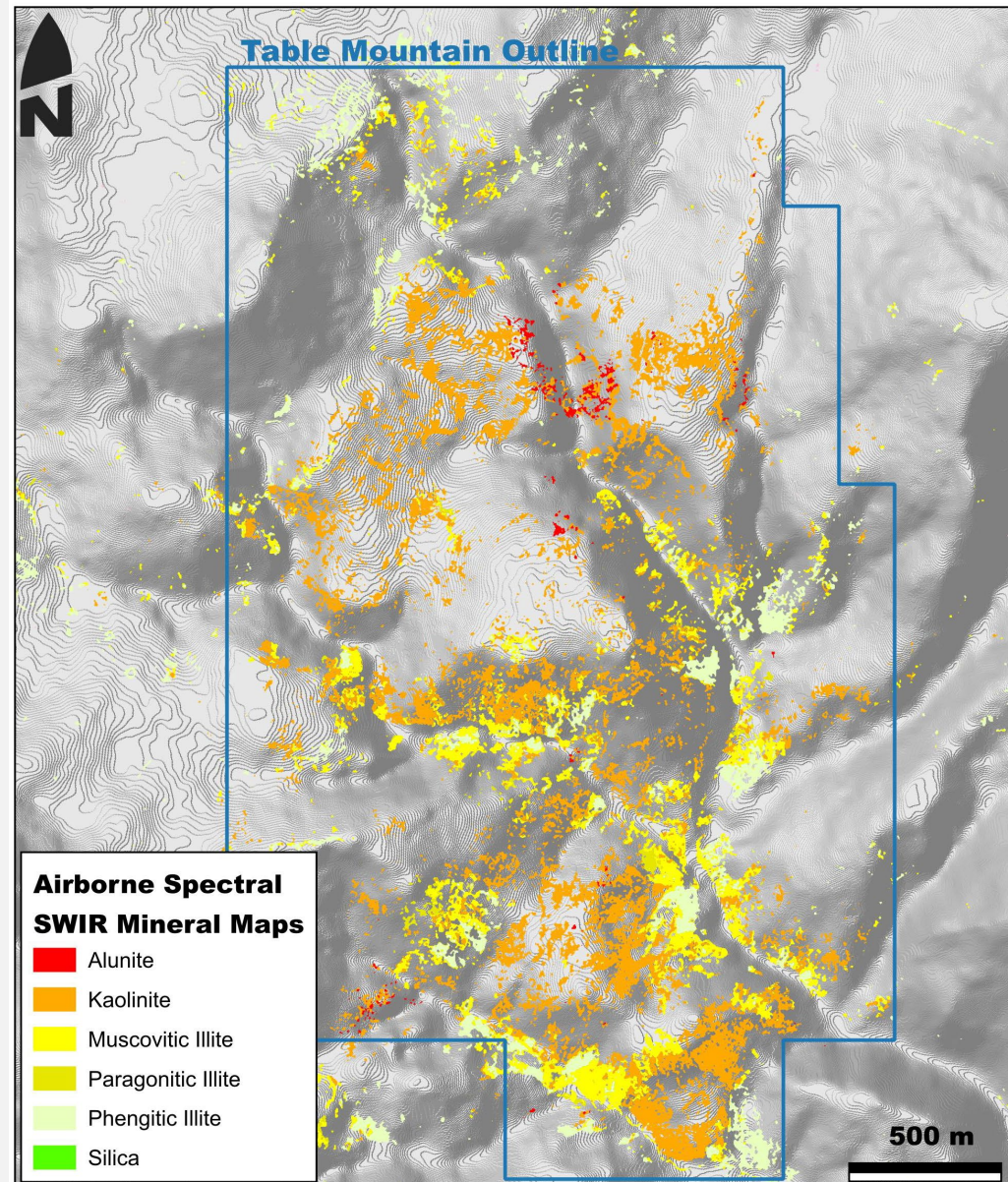


Figure 2 of Best et al., 2013 showing the location of the Indian Peak Caldera Complex. Table Mountain is near the northern side of the complex.

# Alteration Mineralogy

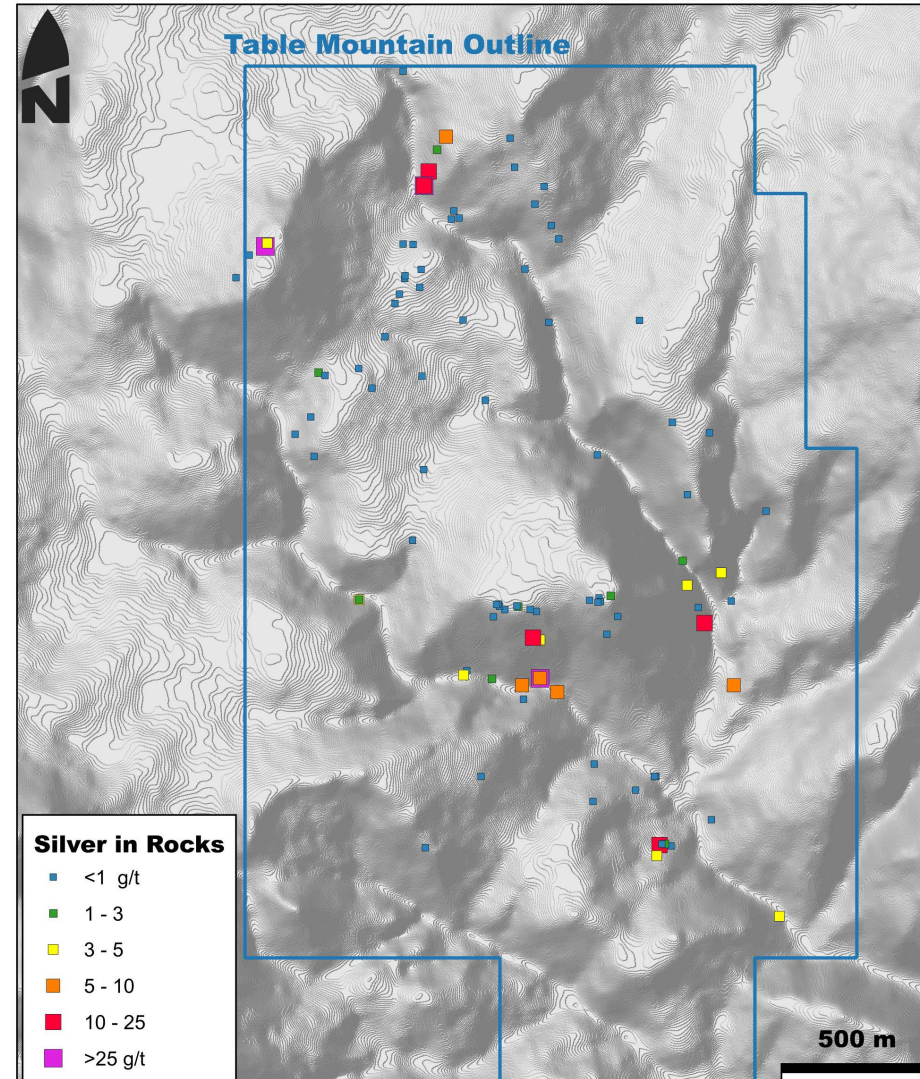
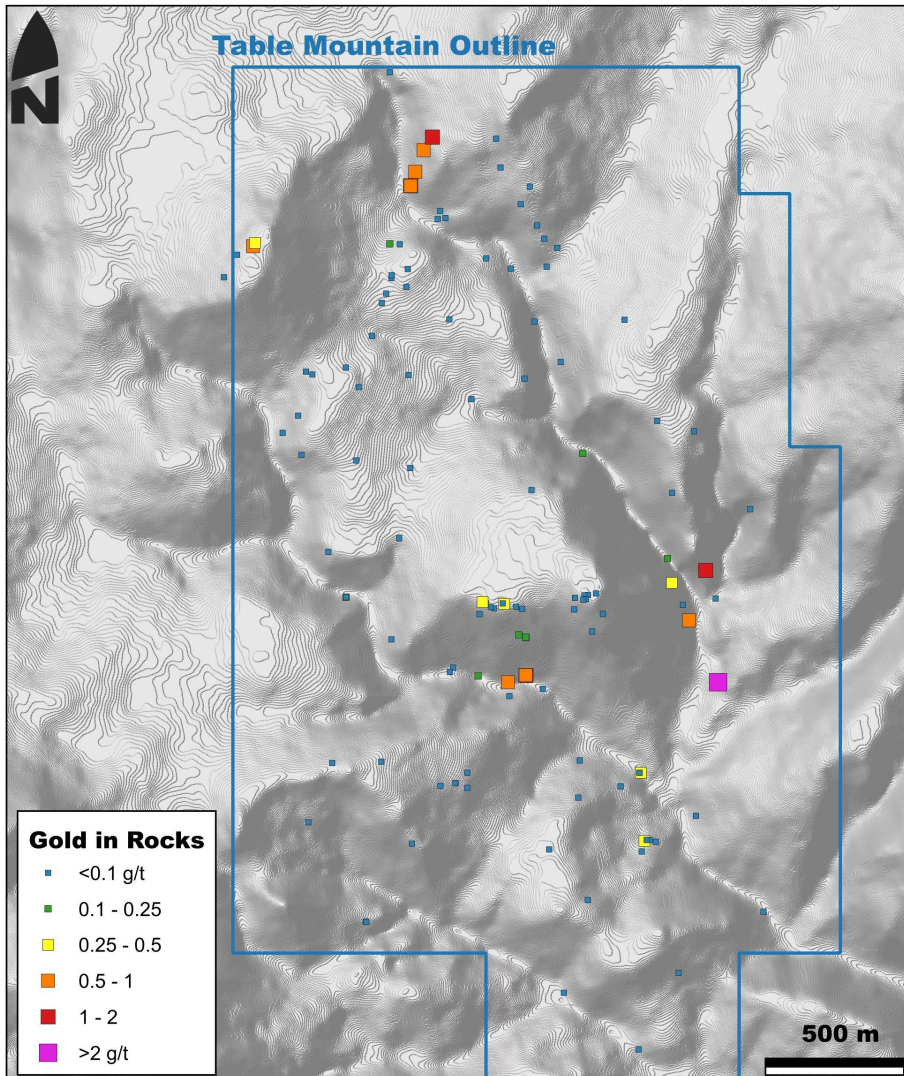
- Four by two kilometre Table Mountain alteration cell composed dominantly of alunite and kaolinite identified in high-resolution airborne spectral survey completed by Orogen
- Deeper levels dominated by illite on north and south side of system
- Confirmed by SWIR analysis of hand specimens collected in the field





# Precious Metal Geochemistry

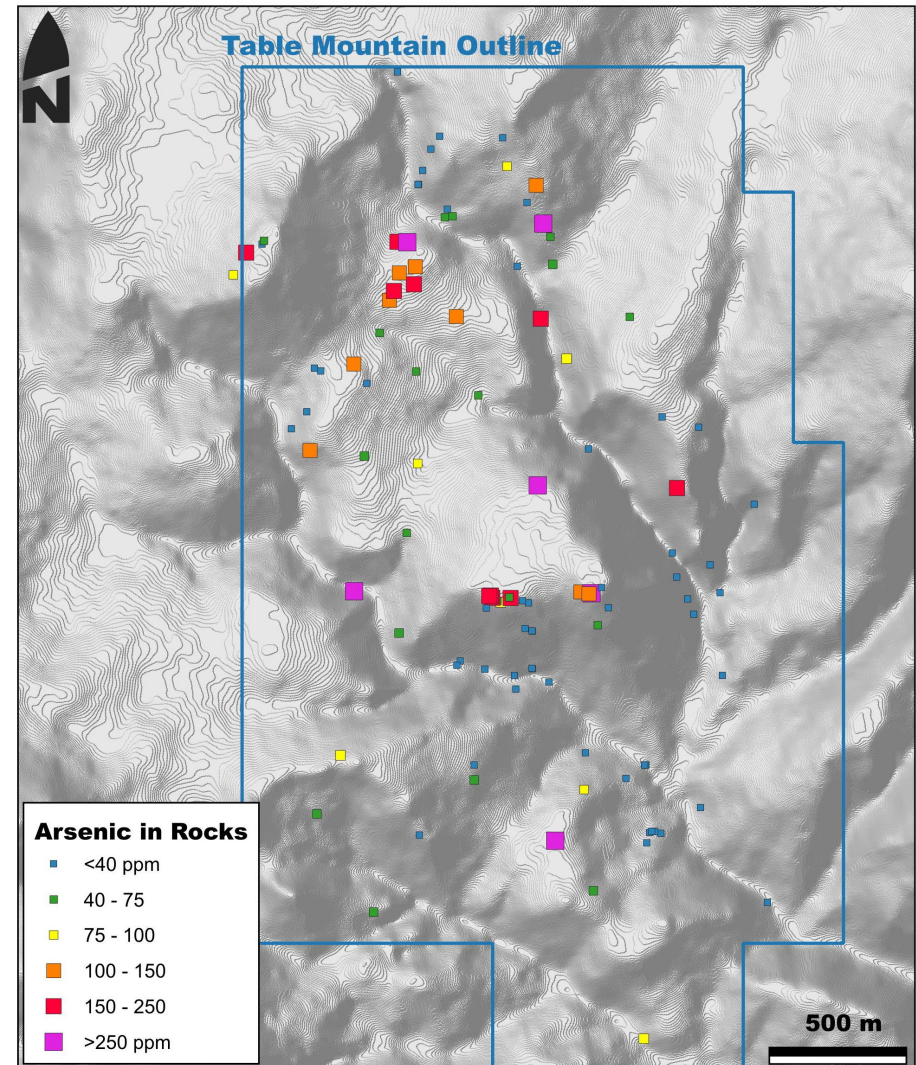
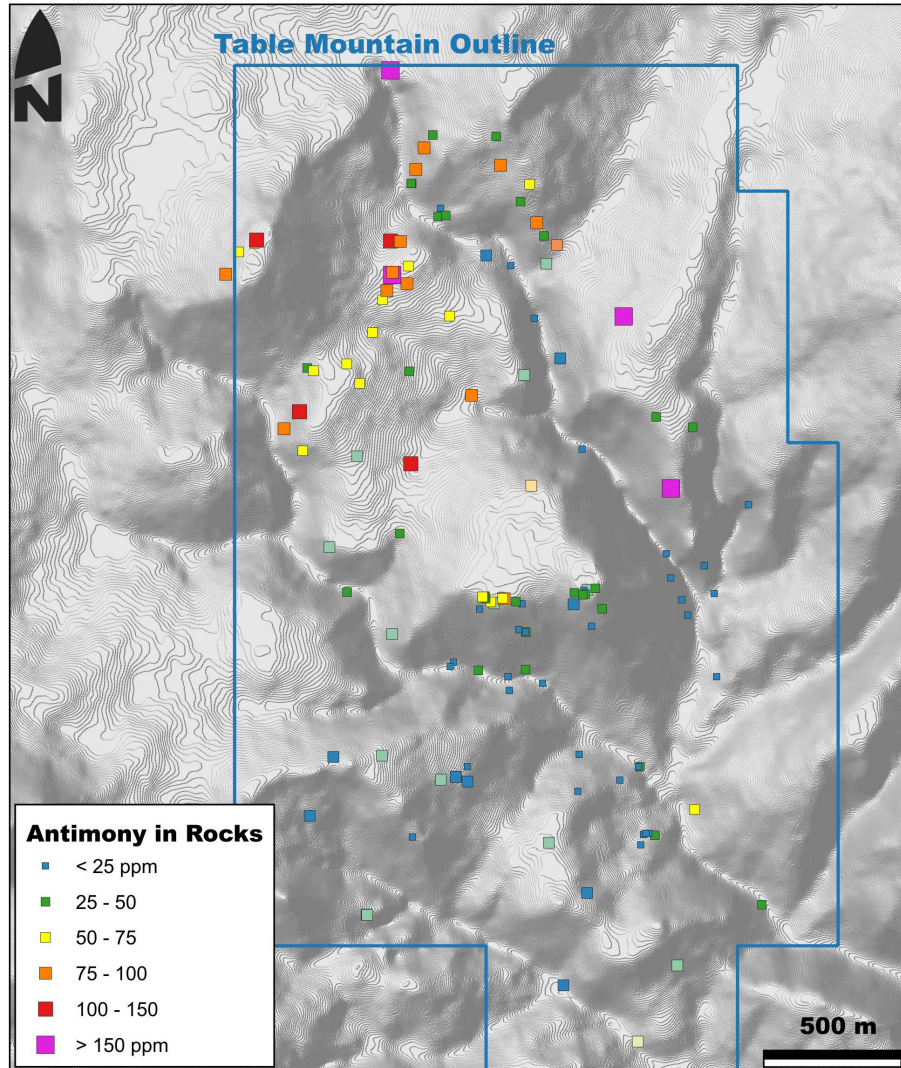
- Gold and silver anomalism coincides with the illite rich (slightly deeper part of the systems)
- Up to 2.62 g/t gold returned from preliminary field work





# Pathfinder Geochemistry

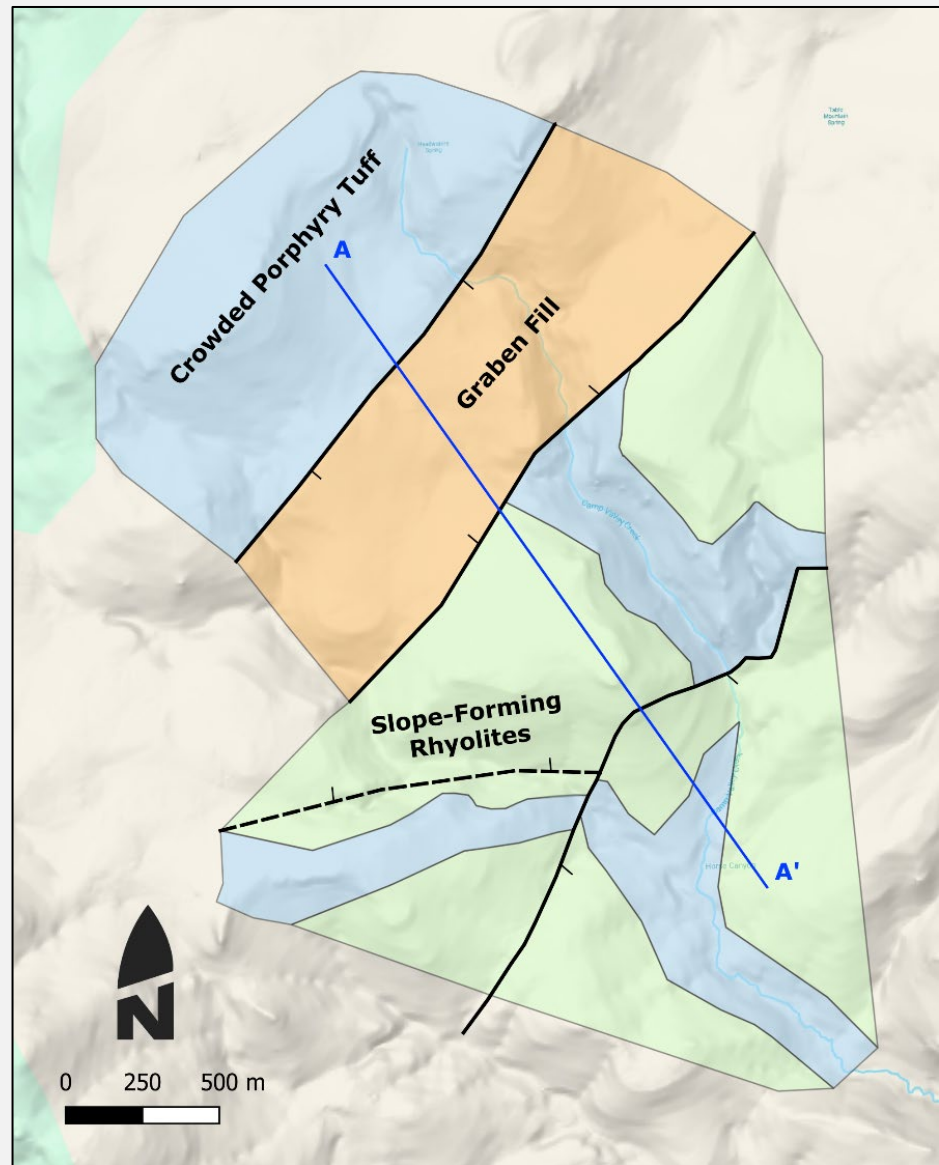
- Pathfinder anomalism including Sb, As and Hg confined to the higher level parts of the alteration cell





# Geology

- Host rocks mapped as Blawn Fm, a bimodal volcanic assemblage post dating major caldera formation in the area
- Three lithologies observed on the property
- Property crosscut by a graben infilled by a strongly argillized lapilli tuff and bound by high-angle normal faults



# Veining and Gold Mineralization

- Widespread veining across the property exhibits multiple orientations and textures
- Textures include green and white fine-grained, banded quartz that commonly has anomalous precious metals and a generally barren, deeper, earlier, coarse-grained quartz with abundant platy silicified calcite
- Veins widths locally exceed 2 metres



Outcrop of an approximately 2.7 metre-wide, southwest-striking vein. A selective sample from a 20 cm wide stage of green chalcidony returned 1.1 g/t gold and 52.6 g/t silver.



# Controlling Structures

- Two dominant vein sets: a northeast-southwest striking set with steep-moderate dips and a subhorizontal set
- Both vein sets are observed to locally cross cut one another
- Both sets observed to host precious metal anomalism
- Bounding structures of the graben target are northeast-southwest striking



Flat quartz veinlet cutting steep, northeast-southwest striking quartz veinlets.

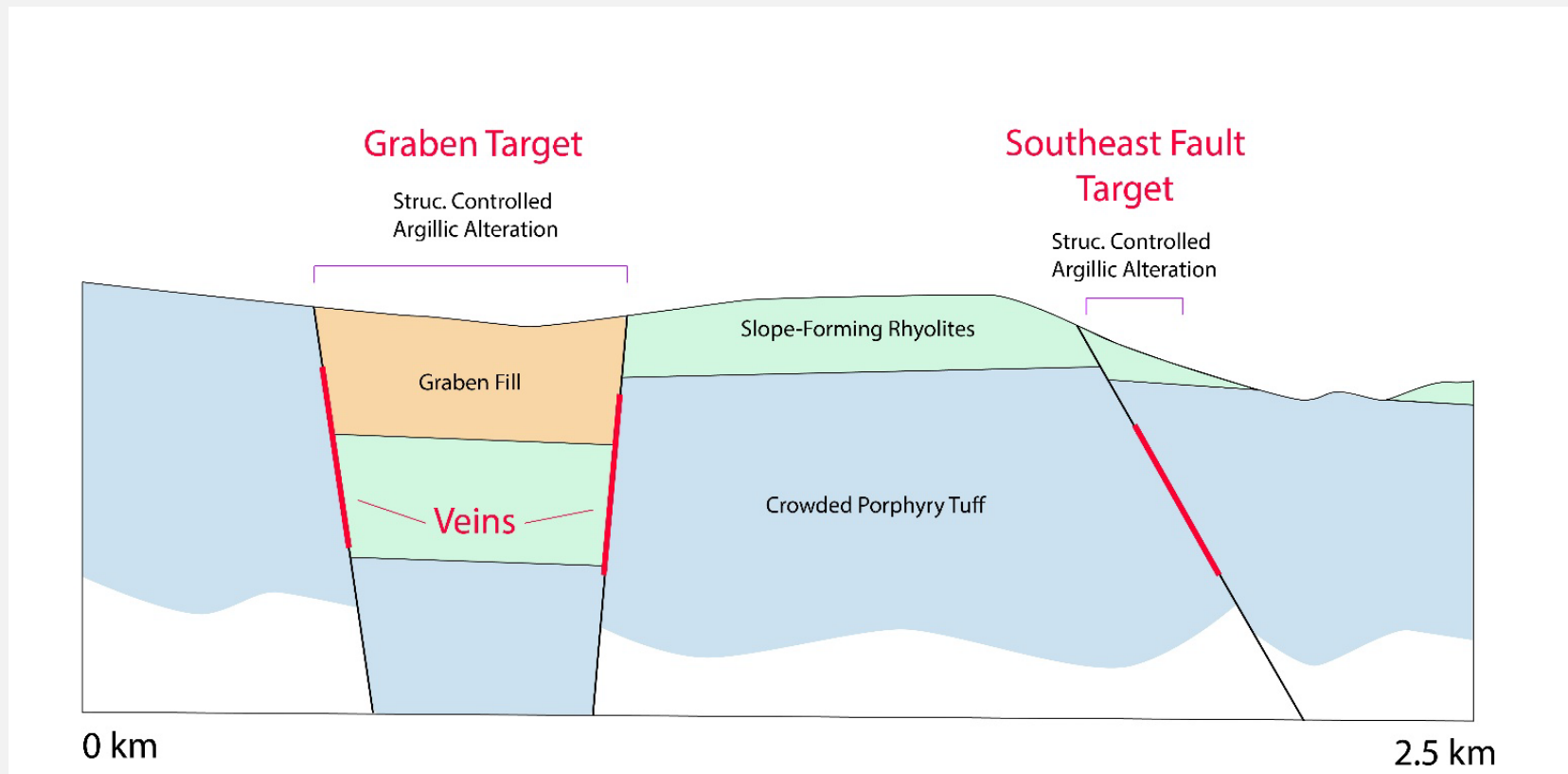


Northeast striking, southeast dipping quartz vein that flattens with depth.



# Drill Targets

- Principal target: graben with strongly argillized lapilli pumice tuff and significant, widespread antimony anomalism. Anomalous gold exposed in veins in the northwestern footwall.
- Secondary target: veins beneath zone of argillic alteration with abundant vein outcrops and gold anomalies. More deeply exposed than graben target.





# Opportunity

- Table Mountain displays significant gold anomalism at surface in a multi-kilometre alteration system that displays no evidence of historical drilling, trenching, prospect pits or claims posts
- Graben on the property constitutes an untested structural target rimmed by precious metal and overlain by strong pathfinder anomalism
- Additional structural target defined by southeastern fault zone which displays steam heated alteration in it's hanging wall consistent with the high levels of a gold bearing epithermal system







## Contacts

**Paddy Nicol**

President & CEO

[paddy@orogenroyalties.com](mailto:paddy@orogenroyalties.com)

**Laurence Pryer**

Vice President Exploration

[laurence@orogenroyalties.com](mailto:laurence@orogenroyalties.com)

**TSXV:OGN**   **OTCQX:OGNRF**

[orogenroyalties.com](http://orogenroyalties.com)

